



1146 N Central Avenue #535
Glendale, California 91202
Phone:
818-763-2021
WWW.AAGAUCATION.COM

PUBLIC AUCTION

Auction Date:
THURSDAY JUNE 13, 2024 @ 11:00 a.m. PT

AUCTION LOCATION:
11310 CANTU GALLEANO RANCH ROAD, JURUPA VALLEY CA

MAJOR ELECTRIC FORKLIFT & STOCK PICKER AUCTION



OVER 40 CROWN SP3520 SERIES ELECTRIC STOCK PICKERS.

PREVIEW
MORNING OF SALE FROM
8:00 a.m-11:00 a.m
"On-line bidding thru bidspotter.com"

PRESORTED
First-Class Mail
U.S. Postage
PAID
STA CLARITA, CA
Permit No. 298

250,000 SQ FT DISTRIBUTION CENTER



OVER 40 CROWN SP3520 SERIES ELECTRIC STOCK PICKERS.



2006 JLG MODEL E400AN ARTICULATING BOOM LIFT, 500 LB CAPACITY, 48V, 40FT MAX PLATFORM HEIGHT, 21.2 FT MAX HORIZONTAL REACH.

RAYMOND & CROWN ELECTRIC FORKLIFTS



2006 JLG MODEL E400AN ARTICULATING BOOM LIFT, 500 LB CAPACITY, 48V, 40FT MAX PLATFORM HEIGHT, 21.2 FT MAX HORIZONTAL REACH.



FEATURING:

Crown RR5000 Series Stand-In Electric Reach Forklift w/ 300" Lift Height, Extendable Forks, Side Shift.

Crown RR5000 Series Stand-In Electric Reach Forklift w/ 270" Lift Height, Extendable Forks, Side Shift.

Crown RR5000 Series Stand-In Electric Reach Forklift w/ 240" Lift Height, Extendable Forks, Side Shift.

(2) Crown RR5226-45 4500 Lb Cap Stand-In Electric Reach Forklifts w/ Extendable Forks, Side Shift, 36V.

Jungheinrich ETR340-36V 4000 Lb Cap Tall Mast Stand-In Electric Reach Forklift s/n 5JR3240916 w/ 240" Lift Height, Extendable Forks, 36V (NO BATTERY).



6 AVAILABLE

6) CROWN RR5225-45 STAND-UP 4500 LB CAPACITY ELECTRIC REACH FORKLIFTS.



CROWN SP3520-30 3000 LB CAPACITY STOCK PICKERS.

(6) Crown 5200 Series 3500 Lb Cap Tall Mast Stand-In Electric Reach Forklift w/ 300" Lift Height, Extendable Forks, Side Shift (NO BATTERY).

Crown 5200 Series 3500 Lb Cap Stand-In Electric Reach Forklift w/ 210" Lift Height, Extendable Forks, (NO BATTERY).

(2) Caterpillar ES3000-36V 3000 Lb Cap Stand-In Electric Pallet Movers w/ 240" Lift Height, 36V.

(3) Raymond 550-OPC30TT 3000 Lb Cap Stand-In Electric Order Picker Lift w/ 273" Lift Height.

(27) Crown SP3520-30 3500 Lb Cap Stand-In Electric Order Picker Lift w/ 300" Lift Height, 24V.

(9) Crown SP3420-30 3000 Lb Cap Stand-In Electric Order Picker Lift w/ 240" Lift Height, 24V.

(2) Crown PE4500-60 Long Fork Walk-Behind Electric Pallet Movers w/ 8' Forks, 24V.

(2) Crown PE3540-80 Long Fork Walk-Behind Electric Pallet Movers w/ 8' Forks, 24V.

Crown PE3520-60 Long Fork Walk-Behind Electric Pallet Mover w/ 8' Forks, 24V

(2) Crown PE4500-60 Walk-Behind Electric Pallet Movers 24V.

2006 JLG E400AN Narrow Articulating Boom Lift s/n 0300093395 w/ 500 Lb Cap, 40' Max Platform Height, 21.2' Max Horizontal Reach, 48 Volt DC System.

Crown TR4500-250 Electric Tow Tractor s/n 6A316697 24 Volt.



CROWN RR5225-45 STAND-UP 4500 LB CAPACITY ELECTRIC REACH FORKLIFTS.



CROWN RR5225-45 STAND-UP 4500 LB CAPACITY ELECTRIC REACH FORKLIFTS.

CROWN ELECTRIC PALLET JACKS & LIFTS



Crown Electric PE 4500 And PE 3500 Series Electric Pallet Jacks.



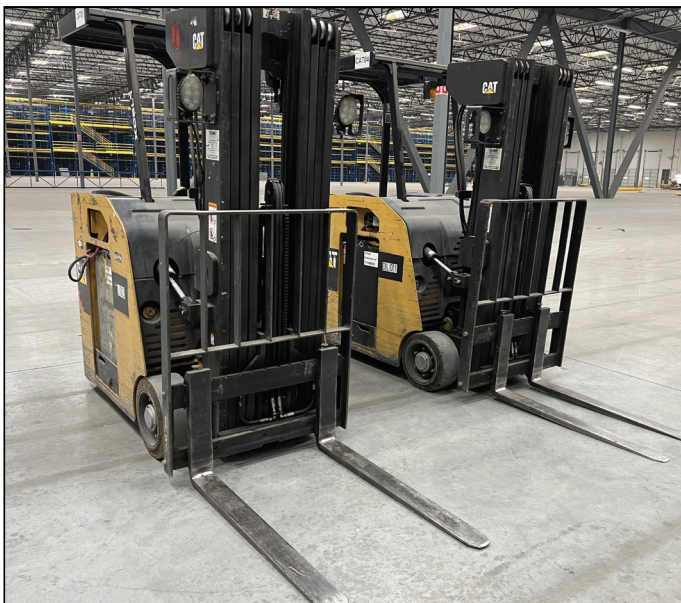
Crown SP3520 Series Electric Stock Pickers



Crown SP Series Stock Pickers



Crown SP Series Stock Pickers



2) CAT ES3000 3000 Lb Capacity Electric Stand-Up Forklifts.



Crown TR 4500 Series Electric Tug, 24 Volt.



PUBLIC AUCTION

MAJOR ELECTRIC FORKLIFT & STOCK PICKER AUCTION



OVER 40 CROWN SP3520 SERIES ELECTRIC STOCK PICKERS.



LARGE SELECTION OF ELECTRIC CHARGERS.



2021 MULTI SHIFTER DST2-44L 10,000 LB CAPACITY BATTERY CHANGER / SHIFTER.



LARGE SELECTION OF ELECTRIC FORKLIFT BATTERIES.



ALL MACHINERY MOVERS MUST BE APPROVED BY THE SELLER PRIOR TO REMOVAL OF EQUIPMENT



BID ON [BIDSPOTTER.COM](https://www.bidspotter.com)

TERMS OF SALE: CASH OR CASHIERS CHECK ONLY. 18% BUYERS PREMIUM ON ALL PURCHASES. \$200.00 REFUNDABLE CASH DEPOSIT. 25% CASH DEPOSIT TOWARDS ALL PURCHASES. ALL SALES ARE SUBJECT TO CALIFORNIA SALES TAX. THERE WILL BE NO EXCEPTIONS.

BID LIVE OR VIA WEBCAST



TERMS AND CONDITIONS
ALL ITEMS ARE SOLD AS-IS / WHERE - IS
NO GUARANTEES, OR WARRANTIES ARE APPLIED
ALL ITEMS MUST BE PICKED UP BY
SPECIFIED DATE



PARTIAL & ABBREVIATED TERMS AND CONDITIONS OF AUCTION

ALL TERMS AND CONDITIONS BEHIND THE BIDDERS CARD SUPPLIED WILL APPLY TO ALL AUCTION SALE ITEMS AND FOR ALL PRIVATE NEGOTIATIONS. BY PARTICIPATING AND BIDDING AT AUCTION YOU ARE LEGALLY BINDING A CONTRACT WITH THE AUCTION COMPANY.

ALL INVOICES MUST BE PAID WITHIN 24 HOURS FROM AUCTION DATE. IT IS PROHIBITED TO BID ON ANY ITEM THAT CANNOT BE PAID IN FULL WITHIN 24 HOURS FROM AUCTION DATE. PAYMENTS MUST BE CASHIERS CHECK, WIRE TRANSFER, OR LETTER OF GUARANTEE FROM BANK.

ALL ITEMS MUST BE REMOVED BY JUNE 21, 2024 3:00 PM (PST)

NO LOADING OR PICK UP ON SATURDAY AND SUNDAY.

NO LOADING BY AUCTIONEER OR SELLER.

BUYERS PREMIUM 18% FOR ALL ONLINE BIDDING ON BIDSPOTTER.COM.

AUCTIONEER IS NOT RESPONSIBLE FOR MIS IDENTIFICATION OF ANY EQUIPMENT OR ASSETS BEING SOLD AT AUCTION EITHER BY VERBAL OR WRITTEN. IT IS THE BUYER'S RESPONSIBILITY TO INSPECT THE GOODS AND ASCERTAIN IF THE SPECIFICATIONS, DESCRIPTIONS AND CONDITION OF THE GOODS CONFORM TO THE BUYER'S REQUIREMENT INCLUDING SERIAL NUMBERS.

BUYER ACKNOWLEDGES THAT THE EQUIPMENT OR ITEMS PURCHASED ONCE MAY HAVE CONTAINED, EXPOSED TO, AND OR UTILIZED HAZARDOUS MATERIAL. THERE MAY BE SURFACES ON ITEMS WHERE DECONTAMINATION CANNOT BE VALIDATED: AS SUCH, THE BUYER OR BIDDER ACKNOWLEDGING THAT THEY ARE ACCEPTING THIS EQUIPMENT OR ITEMS IN AN "AS IS" CONDITION.

BUYER AND THEIR ASSOCIATES WILL HOLD AUCTIONEER AND 'THE SELLER' HARMLESS AGAINST ANY AND ALL CLAIMS AND ACTIONS ARISING OUT OF THE PARTICIPATION OF THE INDEMNITEE IN THE ACTIVITY, INCLUDING, WITHOUT LIMITATION, EXPENSES, JUDGEMENTS, FINES, SETTLEMENTS AND OTHER AMOUNTS INCURRED IN CONNECTION WITH ANY LIABILITY, SUIT, ACTION, LOSS, OR DAMAGE ARISING OR RESULTING FROM THE INDEMNITEE'S PARTICIPATION IN THE AUCTION. ALL BIDDERS MUST ONLY USE APPROVED MACHINERY MOVERS BY SELLER WITH LIABILITY INSURANCE OF \$2,000,000 OR HIGHER. NO ITEMS SHALL BE REMOVED UNLESS PAID IN FULL AND ALL ITEMS SHALL BE REMOVED IN THE TIME ALLOCATED BY THE AUCTIONEER.

ALL SALES ARE FINAL, AND ALL ITEMS ARE SOLD AS IS WHERE IS, WITH ALL FAULTS AND DEFECTS.

THERE ARE NO GUARANTEE OR WARRANTY TO ANY ITEMS SOLD (RE: MAKE, MODEL, YEAR, HOURS, MILES, OR MERCHANTABILITY BY AUCTIONEER OR SELLER). BUYERS RESPONSIBILITY TO INSURE PROPER USE FOR SAFETY.

ALL ITEMS ARE SOLD AS "PARTS ONLY"

BUYER ACKNOWLEDGES THAT THE GOODS ARE PRE-OWNED AND GOODS WERE NEITHER DESIGNED NOR MANUFACTURED BY SELLER. SELLER HAS NO KNOWLEDGE OF OR CONTROL OVER THE PRIOR USE OR MISUSE OF THE GOODS OR ANY MODIFICATIONS TO THE GOODS FOLLOWING ORIGINAL MANUFACTURE. NEITHER DOES SELLER HAVE KNOWLEDGE OR CONTROL OVER THE APPLICATION OF THE GOODS BY BUYER. IT IS THE BUYER'S SOLE RESPONSIBILITY TO PROVIDE PROPER SAFETY DEVICES, EQUIPMENT AND INSTRUCTIONS FOR ANY PARTICULAR USE OR TAKE NECESSARY STEPS TO CONFORM TO THE GOODS AND OPERATION THEREOF TO ALL FEDERAL, STATE OR LOCAL GOVERNMENT SAFETY STANDARDS AND LAWS INCLUDING WITHOUT LIMITATION THE OCCUPATIONAL SAFETY AND HEALTH ACT OF "OSHA". ANNOUNCEMENTS MADE BY THE AUCTIONEER ON THE DAY OF THE AUCTION TAKE PRECEDENCE OVER ANY PREVIOUS PRINTED MATERIAL PERTAINING TO THIS AUCTION. AUCTIONEER RESERVES THE RIGHT TO REMOVE OR ADD TO ANY AUCTION ITEMS ON THE LIST UNTIL AUCTION TIME.

LIVE WEBCAST ONLINE ONLY ~ NO ONSITE BIDDING
JUNE 13, 2024 @ 11:00 a.m.